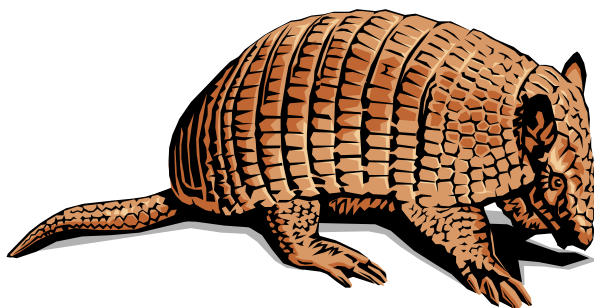


YMCA of Greater Birmingham's

Camp Cosby

Outdoor Classroom

Journal



(The Nine-Banded Armadillo)

Name _____

School _____

Trail Group _____

Table of Contents

Table of Contents	1
Welcome to Camp Cosby.....	2
Discovery Experience	3
Observations and Drawings.....	4
Photosynthesis, an introduction.....	5
Plant Parts	6
Professor Hike Stations	7
More Professor Hike Stations	8
Food Web	9
Rotten Log Study.....	10
Cosby Page.....	11
Incredible Insects!	12
The Same – but Different!	13
Water cycle.....	14
Cosby Page.....	15
What's really there?	16
Living History	17
Garden Page.....	18
Reduce, Reuse, Recycle	19
Cosby Page.....	20
Blank Worksheet	21
Memories.....	22

Welcome to Camp Cosby!

Are you ready for an outdoor environmental adventure? The Cosby Naturalists are waiting to share an exciting learning experience with you. Join us in the outdoor “classroom” where we learn by looking, feeling, smelling, listening, teaching each other, and having fun!

This journal will help you make the best use of your visit to our campus. We hope that this journal will help you remember something by writing it down. But more importantly, when you go home, you’ll have a special record of your visit, created by you!

We’re looking forward to sharing our love of learning about our world and having fun with you and your classmates at Camp Cosby!

-The Cosby Naturalists

Discovery Experience

Observe the world around you. Use your senses to observe your surroundings for at least five minutes, then complete the following exercises.

Date & Time: _____

Describe what you.....

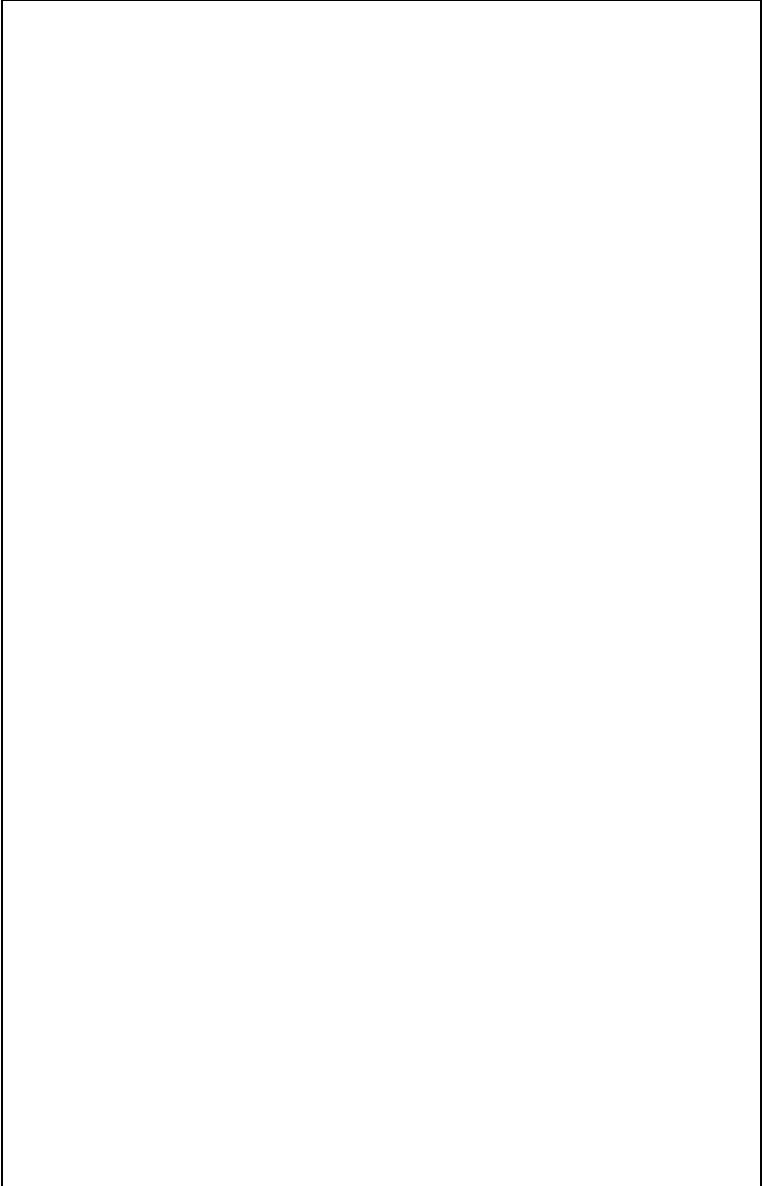
See:

Hear:

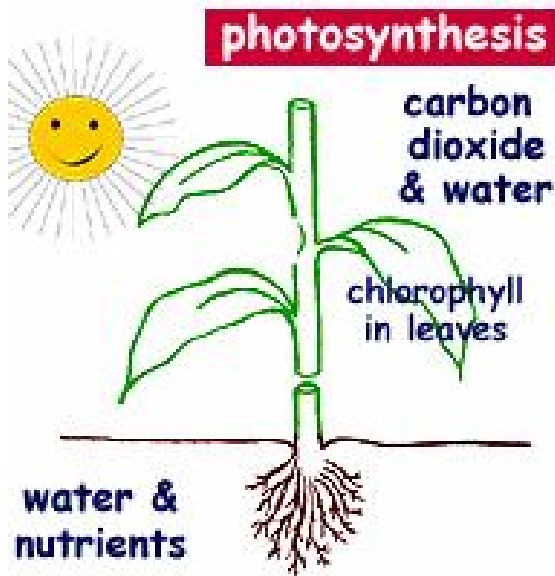
Smell:

Feel:

Draw something you observed! (*just try*)



Photosynthesis, an



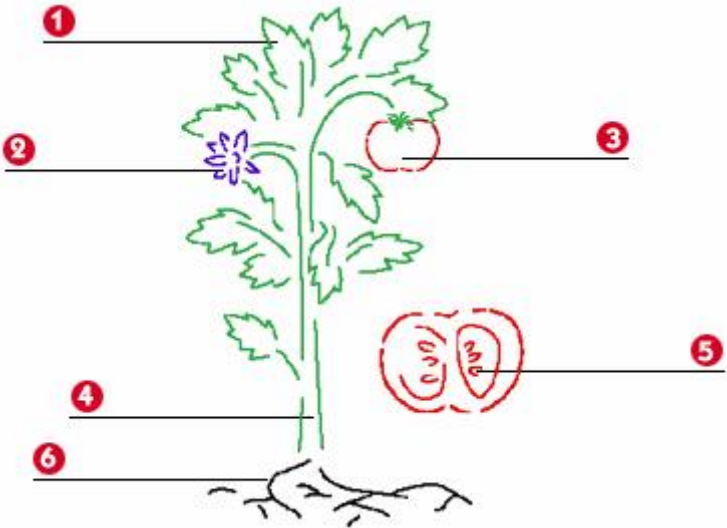
introduction

<http://www.urbanext.uiuc.edu/gpe/case1/c1facts2c.html>

Sunlight
Water
+Carbon Dioxide
= Sugar and Oxygen

Plant Parts

Can you identify the parts of this plant?



6 Parts: flower, fruit, root, stem, leaf, seed

Complete the table...

Food	Plant Part	Do you like it?
Lettuce		
Carrot		
Cinnamon		
Pepper		
Peach		

Professor Hike

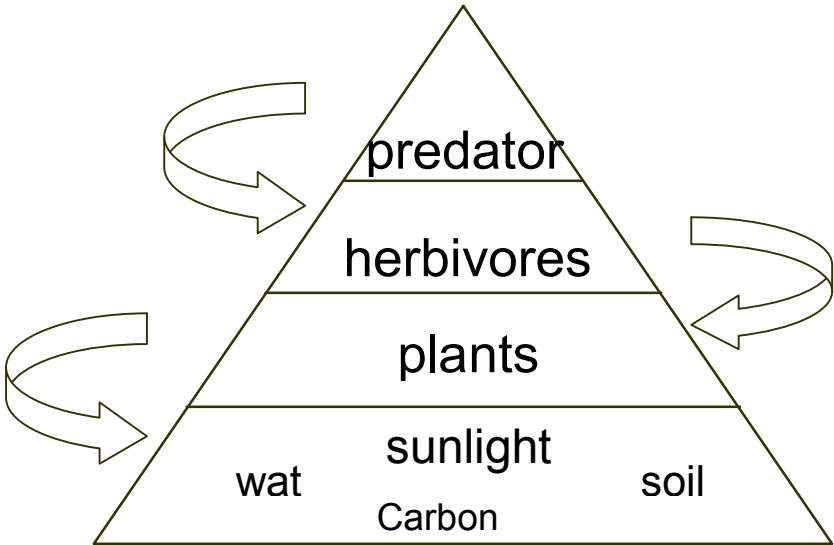
Please list and briefly describe every station that you visited on your professor hike.



More Professor Hike Stations



Food Web



Rotten Log Study

What organisms can you find on your rotten log?

What organisms can you find in your rotten log?

Please list all of the organisms that you observed using their adaptations to survive and what those adaptations are.



Every life form has
adaptations...

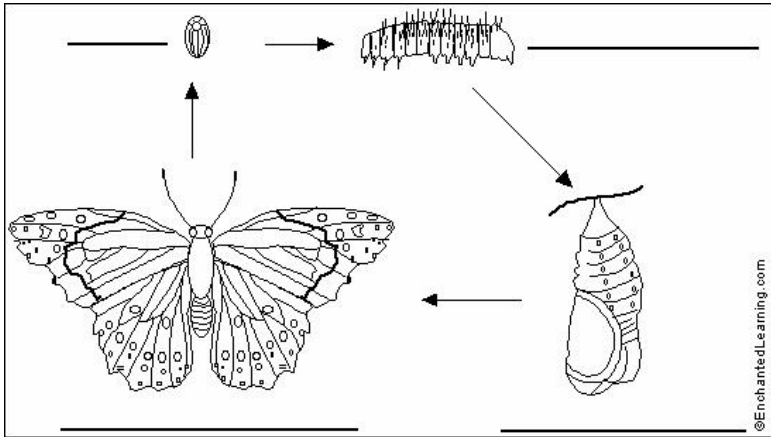
Even you!



Incredible Insects!

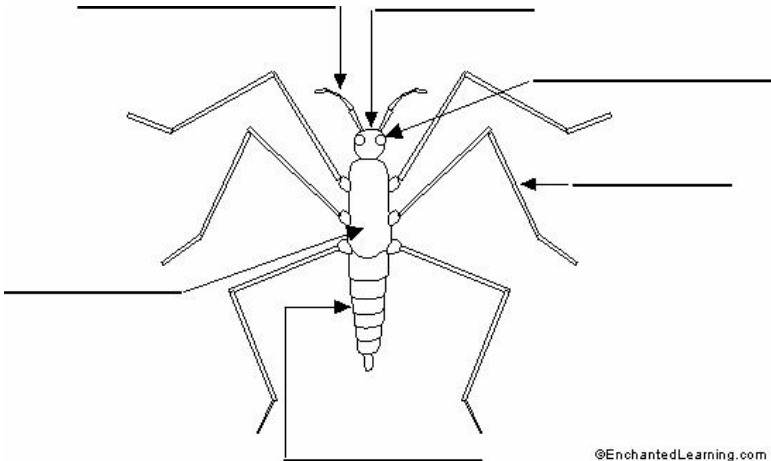
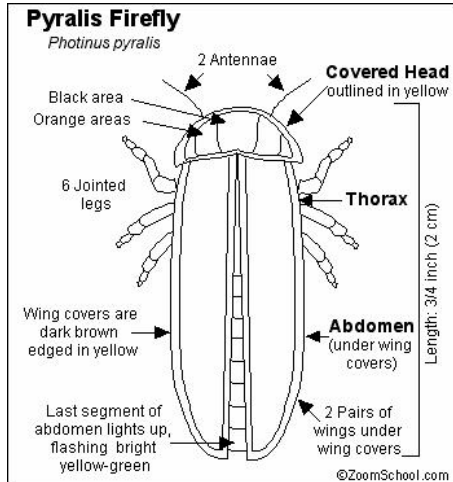
Stages of Insect Metamorphosis

Complete the diagram with: adult, larvae, pupa, & egg



The Same -but different!

Use the firefly diagram to help you complete the insect diagram below!

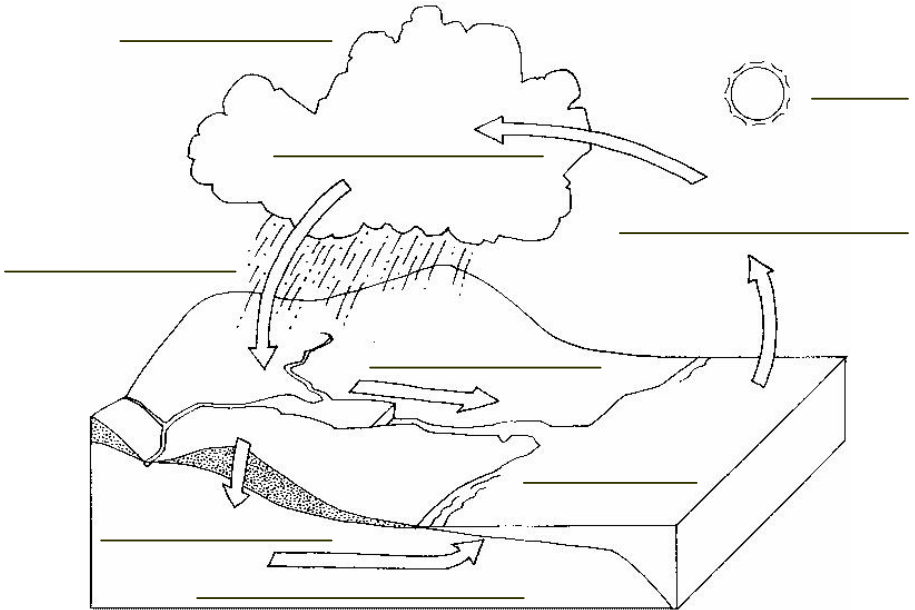


Please list five differences between the two insects!

Water cycle

Please label the diagram with
the words in the box!

precipitation	evaporation	ocean
cloud	run off	condensation
groundwater	sun	infiltration



<http://www.catskillcenter.org/programs/csp/H20/Lesson1/h2ocycle.gif>

Water, water

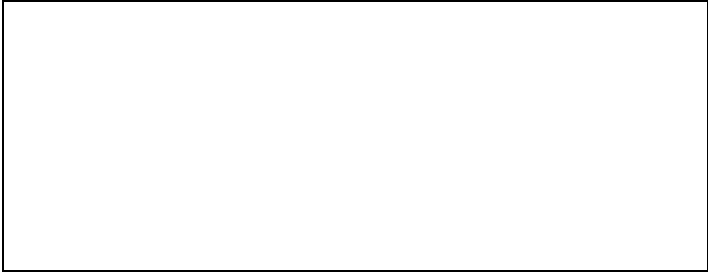
everywhere!



What's really there?

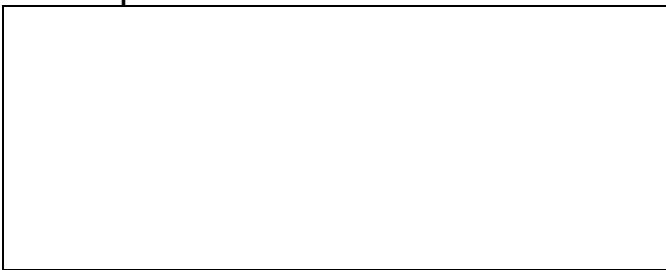
Please describe what your samples are of, where you found them and what you think they are.

Draw your specimen.



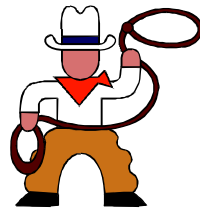
Examine your specimen through the stereo scope and describe what you now see.

Now draw what you see through the stereoscope.



Living History

List at least six differences between life as it was in the 1800's and life in the 2000's.



The Garden Page

Please list what different types of vegetables that you can see here.

How does the garden sustain itself?

What type of help is required for the garden to be productive?

What is your favorite thing about this or other gardens?



Reduce, reuse, recycle

What do these words mean to you? Write your thoughts in the gray boxes. Now think about your day – what did you do to reduce, reuse or recycle?

Reduce	Reuse	Recycle

How can you help

**to protect our
natural resources?**

Blank Worksheet

Memories

